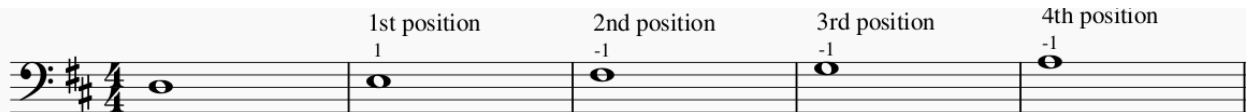


Shifting Exercises

Understanding different positions-As we shift up and down the fingerboard, imagine that each note is a step on a ladder. As we climb up the ladder, we climb into higher positions. In this example, when we place our 1st finger on F# instead of E, we are in 2nd position. When we place our 1st finger on G, we are in 3rd position. When we place our 1st finger on A, we are in 4th position.

*When you see a dash (-1) – that indicates a shift. To get from one position to the next, you will have to shift your whole hand into the new position.



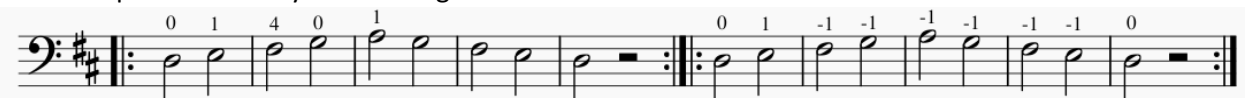
Practice finding new positions. Play each note in first position, then replace that note with your first finger. Focus on matching the pitch and aiming deliberately. Keep your left hand form consistent-your whole hand should move as a unit (especially the thumb!)

Repeat each measure several times. Challenge yourself to get 3 great note matches in a row!

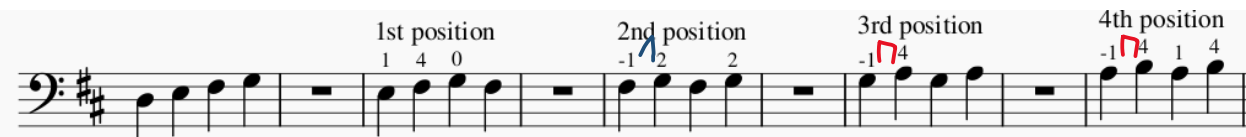
*In the 2nd line, you will need to hop between playing A on the G string and on the D string, take your time and keep aiming for those A's to match!



Climb the ladder-first play this series in 1st position, then try to make it sound exactly the same as you climb the positions with your first finger.



Practice keeping great hand frame as you play the notes in each position. Play each measure normally in 1st position before trying it in the new position so you know exactly what it will sound like.



□ :This means that there is a whole step in between these notes. Always be mindful of where you are in the scale so that you play the proper notes as you are shifting. Do as much as you can in 1st position to get the sound you want in your ear.

↗ :This means there is a half step in between these notes. In this example of 2nd position, F# to G is a half step, so you will use 2nd finger to play this series.

Double bass

All County Scale Requirements

C Major

Measures 1-12: C Major scale, ascending and descending. Fingering: 2 1 0 -4 0 1 2.

G Major

Measures 13-20: G Major scale, ascending and descending. Fingering: 1 4 -1 4 -1 3 4 3 1 -4 1 -4 1.

D Major

Measures 21-27: D Major scale, ascending and descending. Fingering: 2 1 0 0 -1 -2 4 0 -2 -1 0 0 1 2.

Measures 28-36: E Major scale, ascending and descending.

A Major

Measures 37-44: A Major scale, ascending and descending. Fingering: 1 4 -1 4 -1 4 -1 4 T 2 3 2 T -4 1 -4 1 -4 -1 4 1.

F Major

Measures 45-52: F Major scale, ascending and descending. Fingering: 0 4 1 -2 1 -4 1 0 4 1 -1 1 2 -1 4 -2 4 2.

Measures 53-60: Bb Major scale, ascending and descending. Fingering: -4 1 -4 2 1 2 1 0 2 -1 2 -1 4 4 4 1 -2.

B-flat Major

61

Musical notation for B-flat Major, measures 61-68. The notation is in bass clef with a key signature of two flats (B-flat and E-flat). It features a sequence of eighth notes with various fret numbers (1, 4, 2, 4, -1, 4, -1, 4) and trill markings (T) above notes at measures 63, 64, and 65. Measure 68 ends with a whole note.

E-flat Major

69

Musical notation for E-flat Major, measures 69-75. The notation is in bass clef with a key signature of three flats (B-flat, E-flat, and A-flat). It features a sequence of eighth notes with various fret numbers (4, 0, 2, 3, 2, 0, -4, -2, 0, 1) and trill markings (T) above notes at measures 69, 70, and 71. Measure 75 ends with a whole note.

76

Musical notation for E-flat Major, measures 76-82. The notation is in bass clef with a key signature of three flats (B-flat, E-flat, and A-flat). It features a sequence of eighth notes, followed by a whole note with a fermata in measure 81, and ends with a whole note in measure 82.

Schradieck Page 1

For String Orchestra

Kaitlin Springer
Edited by Victor Fernandez
2019

1

0 1 4 -1 4 -1 4 1 0

3

2

1 -1 2 0 1 4 -1 4 1 -1

5

3

4 1 4 -1 4 4 -4 1 1 -1 2 2 -1

7

4

4 0 0 1 4 1 4 0

9

5

4 1 4 -4 1 4 -4 -1

11

6

4 1 1 1 4 1 0 1

13 **7**

15 **8**

17 **9**

19 **10**

21 **11**

23 **12**